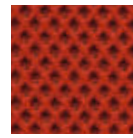


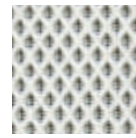
TECHNICAL FABRICS

NEST

Trix



02
orange



03
white



09
slate

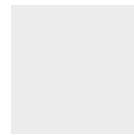
Composition 100% PL

Martindale 30.000



TECH

Plastics Tech Fabric



PB
white



PN
black



PG
grey



PV
green



PP
powder blue



PM
ochre

Eleganza NEW!



N
black



V
green



P
powder blue



M
ochre

Composition 55% SI, 45% PL

Martindale 130.000



Soil
resistant



Easy clean



INSPECTED
QUALITY by OETI

Pen, marker, lipstick...
"Write on and Erase me".
The genuine eco-friendly faux leather.

Recyclable, eco-friendly, healthy, non toxic, free from: solvents, PVC, PU, PFC, formaldehyde, plasticizers, phthalates, heavy metals, BPA, allergens, anti-bacterial additives, biocides, flame retardant substances.

The fabric is suitable for medical use; is resistant to customary disinfecting agents which content alcoholics, aldehydes, quaternary ammonium compounds, oxygen agents, alkylamines as active ingredients.
INSPECTED QUALITY by OETI (Institute for Ecology, Technology and Innovation)