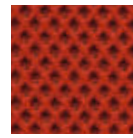


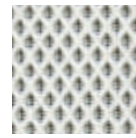
# TECHNICAL FABRICS

## NEST

### Trix



02  
orange



03  
white



09  
slate

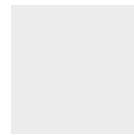
Composition 100% PL

Martindale 30.000



## TECH

### Plastics Tech Fabric



PB  
white



PN  
black



PG  
grey



PV  
green



PP  
powder blue



PM  
ochre

### Eleganza NEW!



N  
black



V  
green



P  
powder blue



M  
ochre

Composition 55% SI, 45% PL

Martindale 130.000



Soil  
resistant



Easy clean



INSPECTED  
QUALITY by OETI

Pen, marker, lipstick...  
"Write on and Erase me".  
The genuine eco-friendly faux leather.

Recyclable, eco-friendly, healthy, non toxic, free from: solvents, PVC, PU, PFC, formaldehyde, plasticizers, phthalates, heavy metals, BPA, allergens, anti-bacterial additives, biocides, flame retardant substances.

The fabric is suitable for medical use; is resistant to customary disinfecting agents which content alcoholics, aldehydes, quaternary ammonium compounds, oxygen agents, alkylamines as active ingredients.  
INSPECTED QUALITY by OETI (Institute for Ecology, Technology and Innovation)