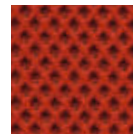


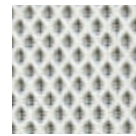
# TECHNICAL FABRICS

## NEST

### Trix



02  
orange



03  
white



09  
slate

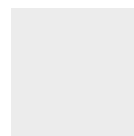
Composition 100% PL

Martindale 30.000



## TECH

### Plastics Tech Fabric



PB  
white



PN  
black



PG  
grey



PV  
green



PP  
powder blue



PM  
ochre

### Eleganza NEW!



N  
black



V  
green



P  
powder blue



M  
ochre

Composition 55% SI, 45% PL

Martindale 130.000



Soil  
resistant



Easy clean



INSPECTED  
QUALITY by OETI

Pen, marker, lipstick...  
"Write on and Erase me".  
The genuine eco-friendly faux leather.

Recyclable, eco-friendly, healthy, non toxic, free from: solvents, PVC, PU, PFC, formaldehyde, plasticizers, phthalates, heavy metals, BPA, allergens, anti-bacterial additives, biocides, flame retardant substances.

The fabric is suitable for medical use; is resistant to customary disinfecting agents which content alcoholics, aldehydes, quaternary ammonium compounds, oxygen agents, alkylamines as active ingredients.  
INSPECTED QUALITY by OETI (Institute for Ecology, Technology and Innovation)

# À LA MODE FABRICS

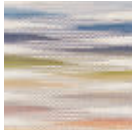
NEW!

## MISSONI

### Eleganza



MK  
Color Black



MW  
Color White

Composition 100% PL (Trevira CS)

Martindale 11.000



MZ  
Zigzag

Composition 96% PL FR, 4% PL

Martindale 25.000



### Pop/Mademoiselle/Cushions



QQ  
vevey red tones

Composition 100% CO

Martindale 25.000



## MOSCHINO

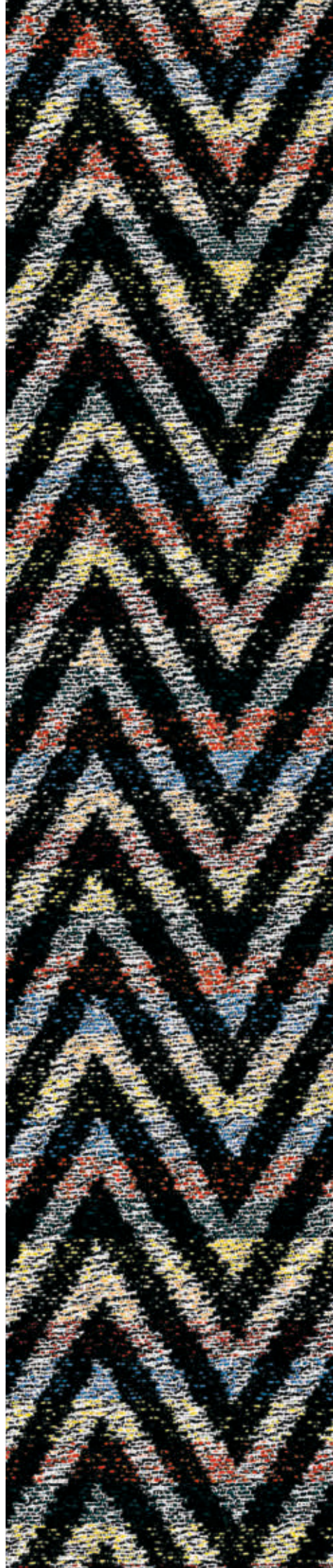
### Mademoiselle



FM  
sketches

Composition 100% CO

Martindale 39.000

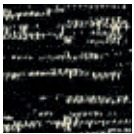


# TREND FABRICS

NEW!

## MELANGE

### Eleganza



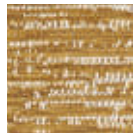
1  
black



2  
dove grey



3  
sky blue



4  
mustard



5  
rust

Composition 45% post industrial recycled Cotton, 10% LI, 28% PC, 12% PL, 5% VI

Martindale 30.000



Made from  
recycled fabric

NEW!

## RUBELLI® DÉJEUNER SUR L'HERBE

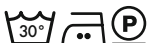
### Madame



D  
Déjeuner

Composition 100% CO

Martindale 20.000



OEKO-TEX®  
CONFIDENCE IN TEXTILES  
STANDARD 100

NEW!

## RUBELLI® QUATREFOIL DESIGN BY LUKE EDWARD HALL

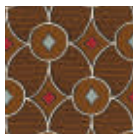
### Mademoiselle/Clap



RC/A  
Cream



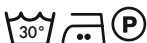
RP/S  
Pistachio



RB/W  
Brown

Composition 100% CO

Martindale 20.000



OEKO-TEX®  
CONFIDENCE IN TEXTILES  
STANDARD 100

